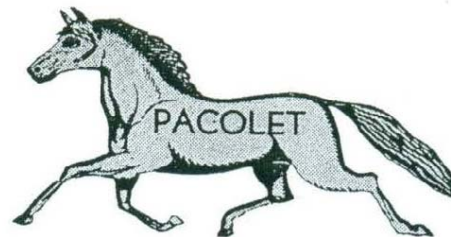
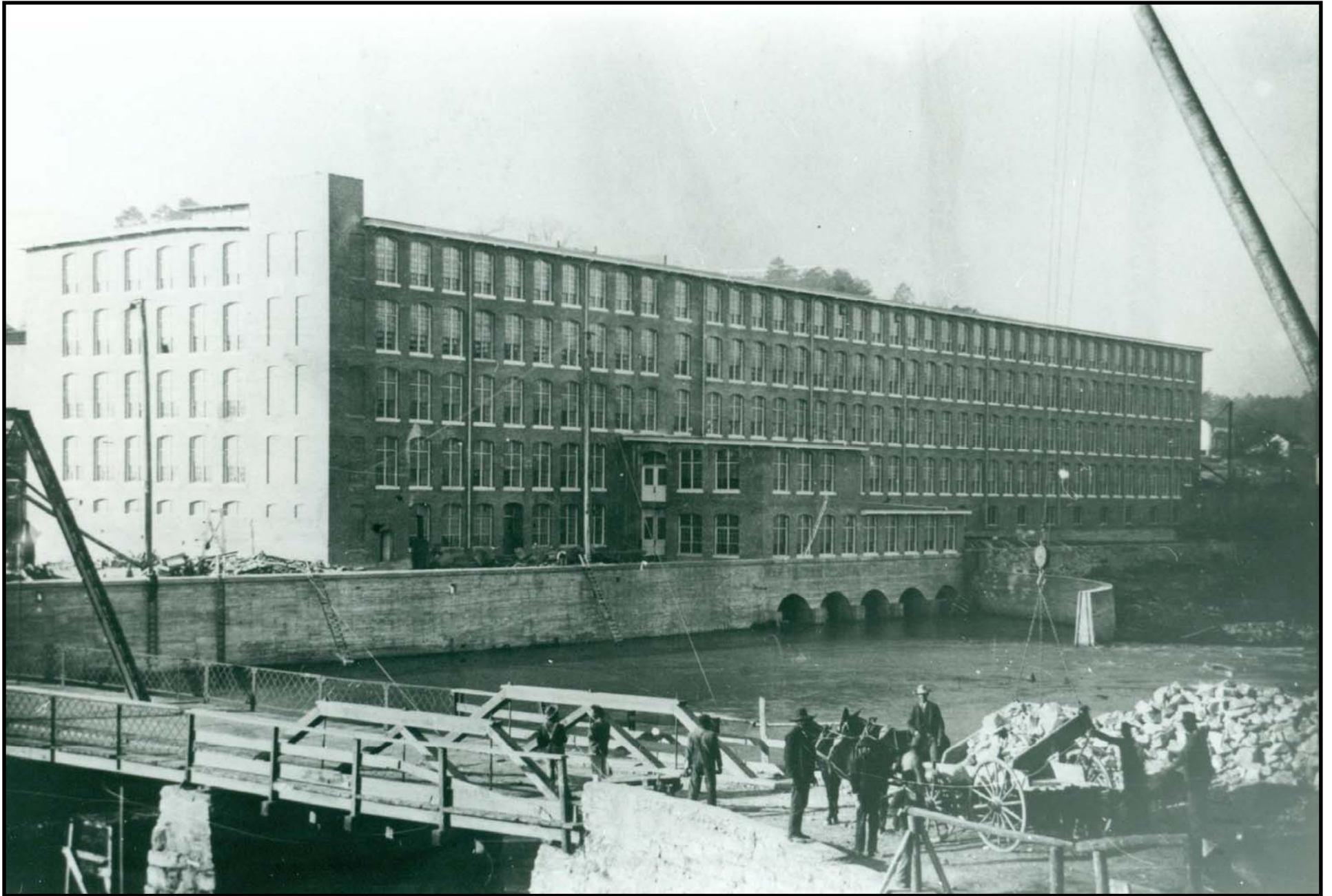




# Pacolet Mills - Album No. 3





**Mill No. 5 or the “New Mill”.** It was built on the site of the destroyed mills, No. 1 and 2. It started operation in 1907 and continued in operation until the mill closed in 1983. It was torn down around 1995.



This is a view of Mill No. 5 (the New Mill) taken from across the river from the company pasture.



This aerial photo of the [New Mill](#) appeared in an advertisement of the Saco - Lowell Company in 1949.



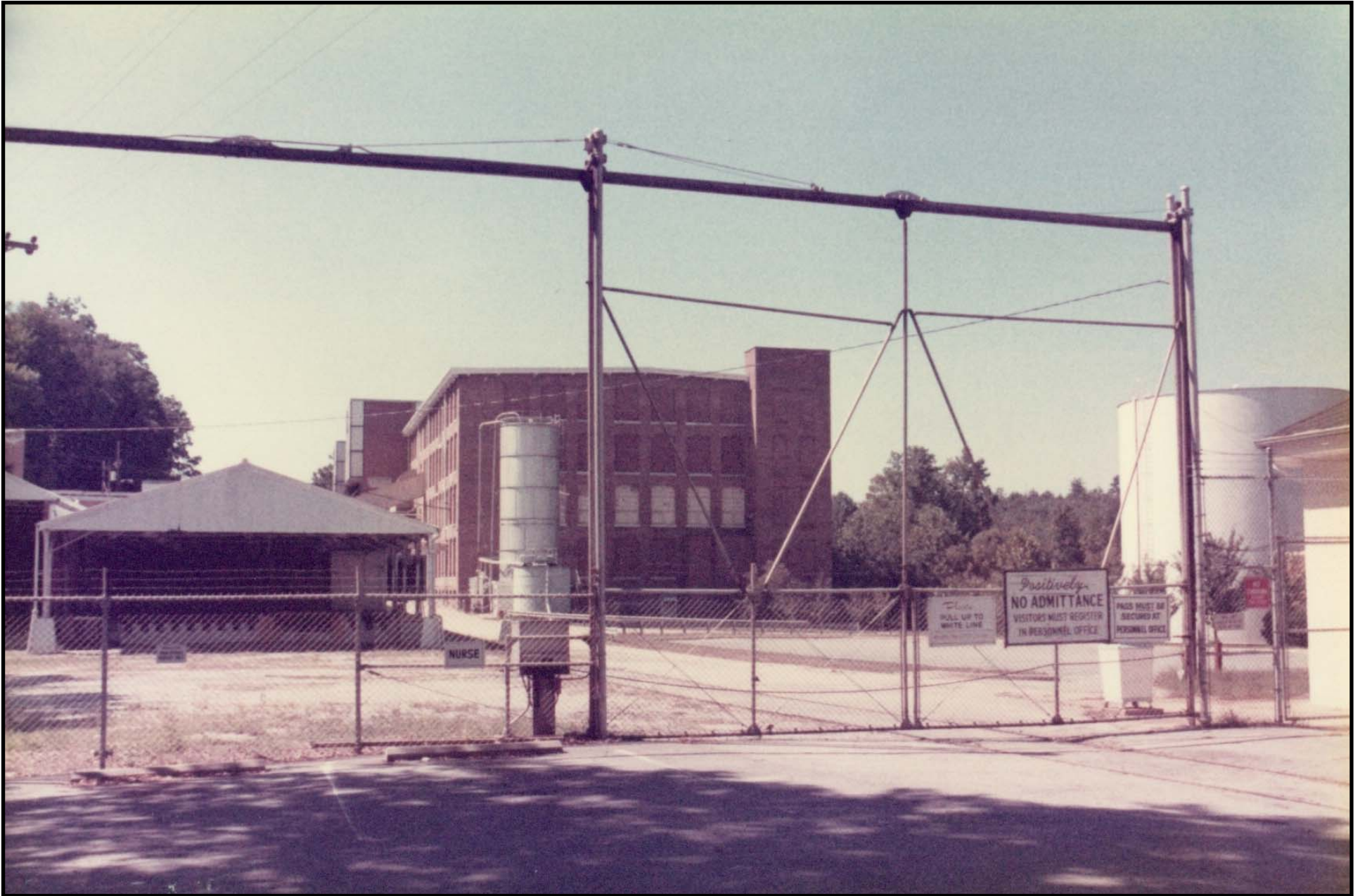
This view looks up the [Pacolet River](#) toward the [dam](#). The [New Mill \(No. 5\)](#) is still standing as seen in the left side of the photo. A view of the same scene today is shown on page 6.



**This same view as shown on page 5 as it looks today.**



The [New Mill \(No.5\)](#) after it was closed but before it was torn down. See page 9 to see how the site looks today.



The [New Mill \(No. 5\)](#) after it was closed and fenced off. Note the “[Dummy](#)” tracks going under the fence on the right and the corner of the [Filling Station](#) beyond it.

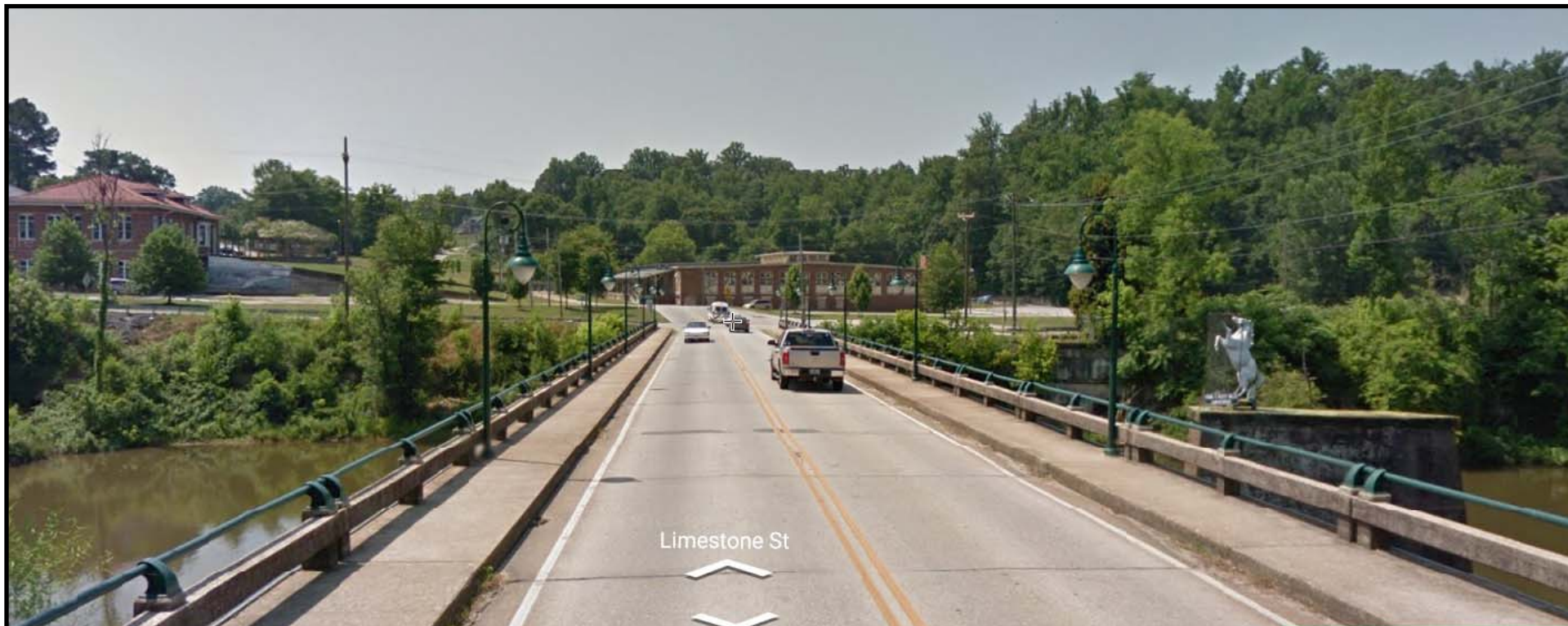




View of former [New Mill \(No. 5\)](#) site shown on page 7 as it looks today. Note that the trace of the [“Dummy” tracks](#) is in the same location.



This view is of the old iron bridge, looking across the river to the Hall, Cloth Room and Office (present Town Hall). It was replaced by the present bridge in 1953. This must have been taken in the early 1920's. Notice the "old style" houses in the background. Also, the "Filling Station" in the Flat had not yet been built. Note the "Dummy" locomotive in the left of the photo. The bridge had a lane divider that was removed before the 1940's and 50's.



Somewhat the same view as on page 10 as it appears today. Piers from the [old bridge](#) are seen to the right and trees have obscured the [“new style houses”](#) in the background.



New bridge being built in the early 1950's.



Girls walking across the [old bridge](#) on the narrow pedestrian walkway. The walkway boards were not fitted closely together and there were big cracks between them. The swift flowing [river](#) could be clearly seen 50 feet below. I have heard many people talk about having bad dreams that involved falling through these cracks.