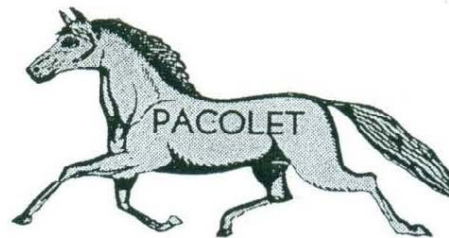




In the Vicinity of the Pacolet Town Hall, the Pacolet Mills Baptist Church and the Old Cotton Gin in Pacolet Station.

Album 20



This album contains pictures furnished by the family of [Mrs. Eloise Seay Mathis](#) and are taken in the vicinity of the [Pacolet Town Hall](#), the [Pacolet Mills Baptist Church](#), and the [Old Cotton Gin in Pacolet Station](#) . There is a Legend Map after each area showing where the pictures were taken. The pictures in this Album are in the PDF format that will allow you to zoom in and magnify the pictures.



This is the present [Pacolet Town Hall](#). When the [Mills](#) were in operation, the employment office was housed in this building. At one time, this building also housed the Community Bank. The president of the bank was General Westmoreland's father. The [Pacolet Community Museum](#) is now located in the basement of this building.



This concrete pergola is located over the sidewalk that connected the [Town Hall](#) to the [YMCA \(The Hall\)](#) that has been long since torn down. The waiting area for people to catch [Taxis](#) was alongside this sidewalk on the upper level.



Another view of the pergola. The [Montgomery Memorial Methodist Church](#) can be seen in the distance across the [Pacolet River](#). The “Crooked Steps”, to the left, lead down to [The Flat](#) and [The Girls Club](#).



Another view of the pergola from a slightly different angle.



A view of the steps leading down from the level of the [Town Hall](#). Because of their construction, these were known as the “Crooked Steps”, at least to the children. The steps leading to the left continued on to the [Girls Club](#) located in the [YMCA](#) or as it was more commonly called [The Hall](#). The steps leading to the right went to [The Flat](#).



This Map shows the page number where the photos were made.



The front of the [Pacolet Mills Baptist Church](#).



A side view of the church showing some of the stained-glass windows.



Another view of the church.



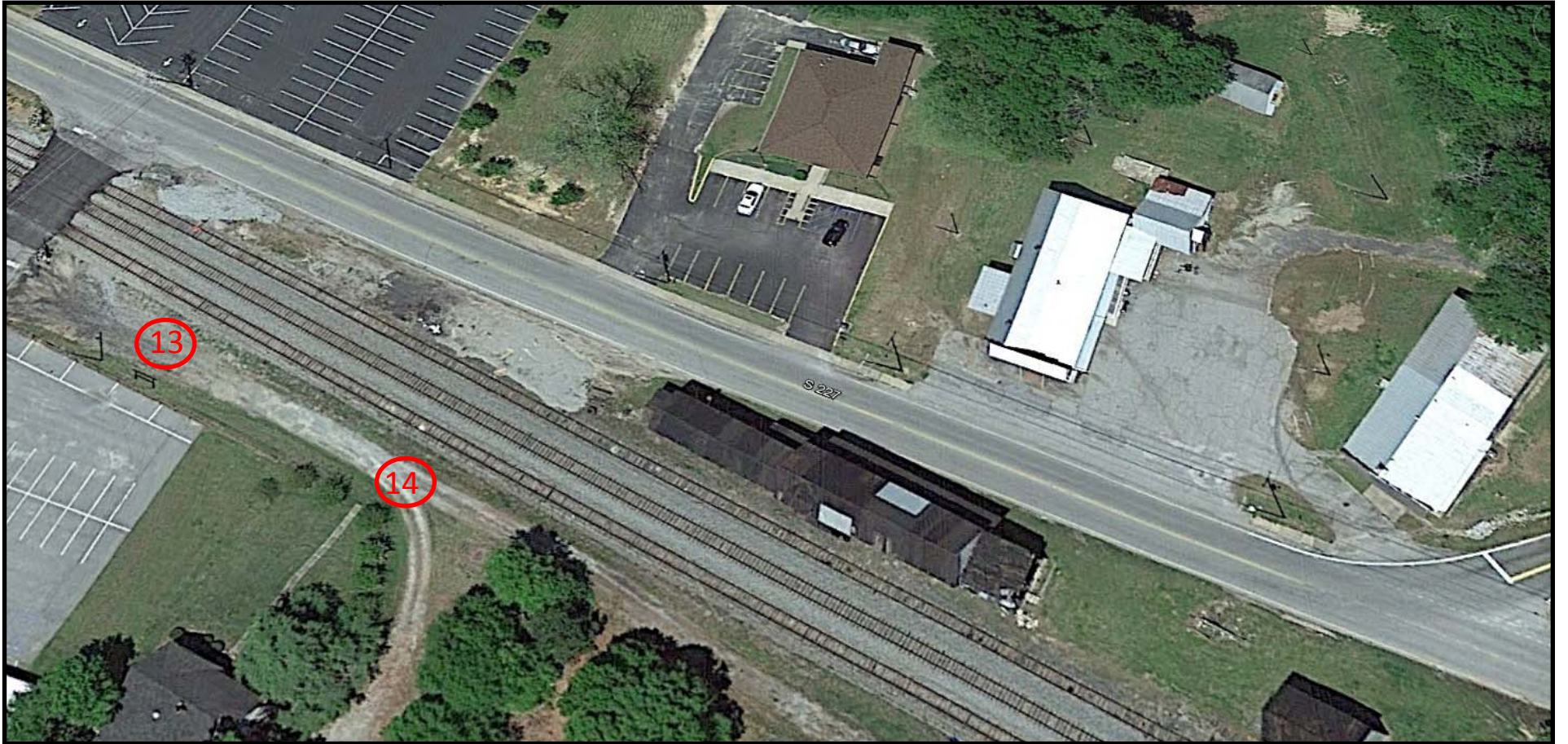
This Map shows the page number where the photos were made.



This view in [Pacolet Station](#) looks down the railroad tracks at the Old Cotton Gin on the right, the former [Brown's Store](#) in the middle and the present post office to the left.



A close up view of the Old Cotton Gin. Before [World War II](#), growing cotton was an important part of the economy of Spartanburg County. Local farmers brought their cotton, in the fall, to gins like this, to have it baled and the seeds removed. The [Pacolet Railway Depot](#) was at one time located on the other side of the railroad tracks several hundred yards beyond. It was torn down many years ago.



This Map shows the page number where the photos were made.