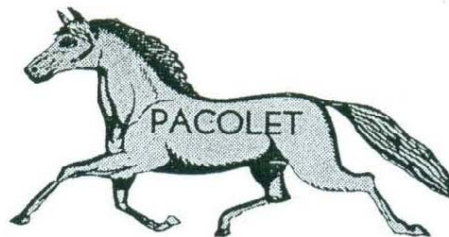
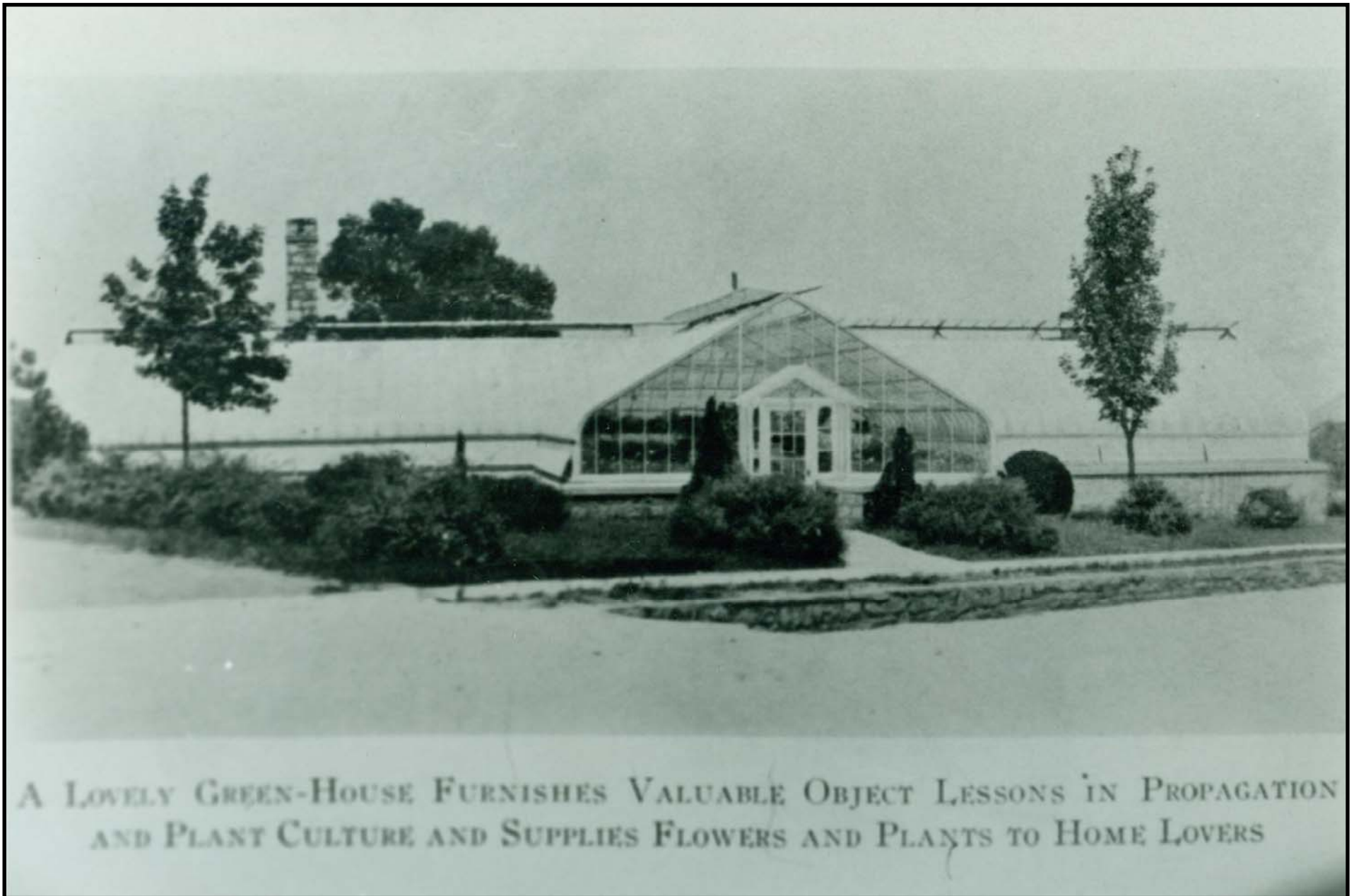




Pacolet Mills - Album No. 2





A LOVELY GREEN-HOUSE FURNISHES VALUABLE OBJECT LESSONS IN PROPAGATION
AND PLANT CULTURE AND SUPPLIES FLOWERS AND PLANTS TO HOME LOVERS

This green house has long since been torn down. It was located on Stone St. across the road from the [Methodist and Baptist Parsonages](#). See what the site looks like today on page 3.



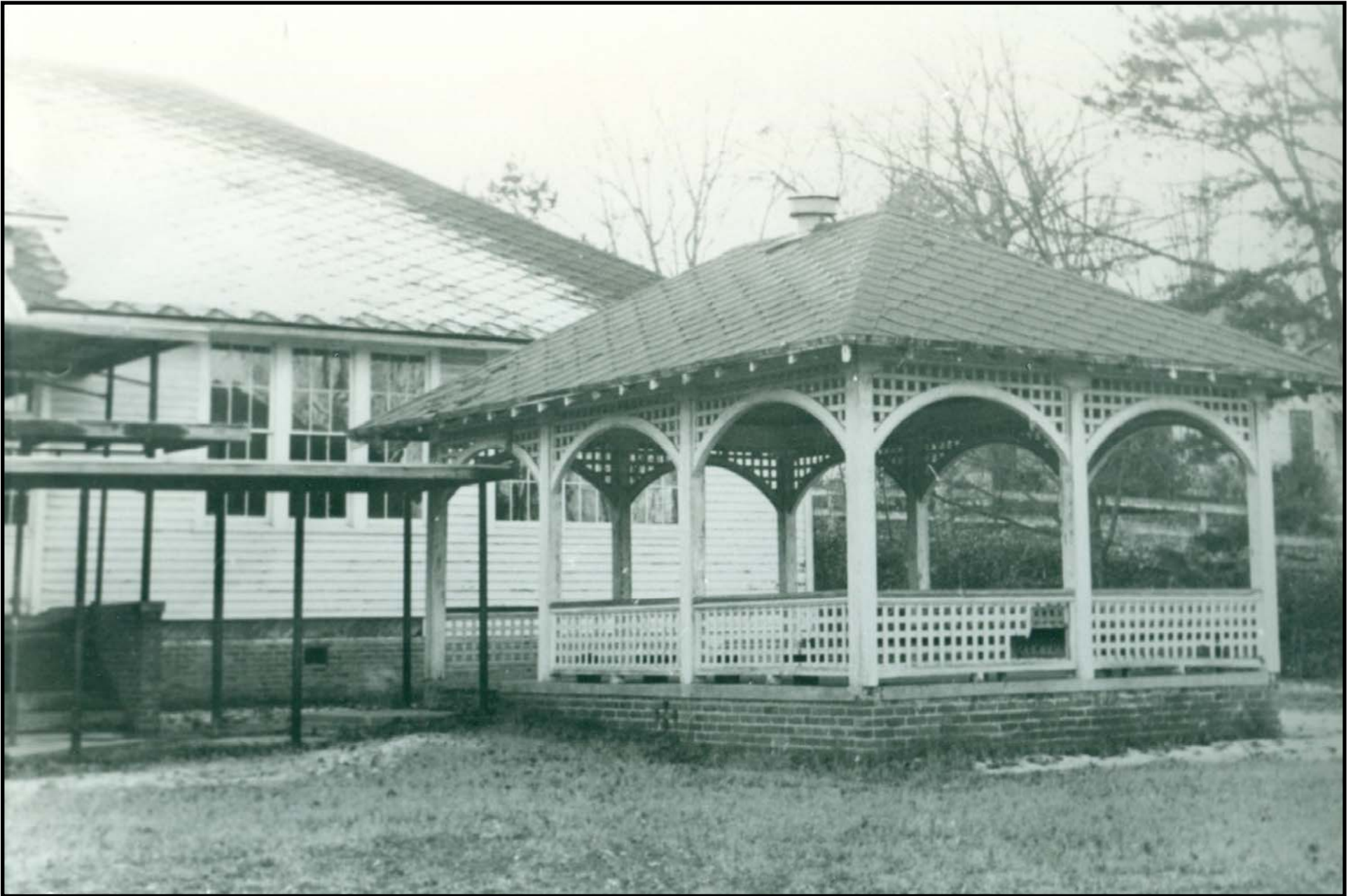
Former location of [Mill Company](#) Green House.



This house on Montgomery St., next to the [Hall](#), had a varied history. In the 1920's and 30's it was the site of the [Girl's Club](#). After the [Hall](#) was built, the [Girl's Club](#) was relocated to it. Next, it became the home of [Dr. Hill's clinic](#) in the late 1930's, 40's, 50's and 60's. It was torn down along with most of the other [Mill Company](#) buildings. What the site looks like today is shown on page 5.



The site of [Dr. Hill's](#) clinic as it looks today.



Part of the Annex at [Pacolet Mills Elementary School](#). This part of the school was used for the lower, primary grades. Upper grade classes were held in the main brick school building next door. This side of the Annex was the “front” in that it overlooked the stadium and [the mill](#) and the [mill village](#) beyond that.



This is a view of the Annex from the other side where the playground was located. A part of the playground swing can be seen. The building on the right edge of the photo is the main brick structure of [Pacolet Mills Elementary School](#).



This is a photo of the [Bryant Memorial Pentecostal Church](#) in [Kegtown](#). It was probably taken in the 1960's or 70's. A picture of the same church as it appears today is shown on page 9.



This is a photo of the [Pentecostal Church](#) in [Kegtown](#) as it looks today. Note the addition of the steeple and the paved parking lot.



This water tank used to stand at the end of Tightwad (Granite St.) . This spot was chosen because it was one of the highest spots in the [mill village](#). I have a particular memory of the water tank . When I was 4 years old, my family lived on Tightwad. One day, painters were painting the tank and left their ladder up when they went to lunch. I climbed their ladder and then onto the main tank ladder and climbed almost all the way to the top. I knew how to climb up but not down. I was rescued by a neighbor who saw my predicament. A new tank is on this spot today and is shown on page 11. This old tank can be seen on the skyline in the photo on page 6 of [Album No. 1](#).



This tank was built on the same spot as that shown on page 10.