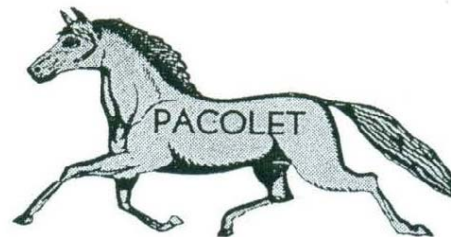
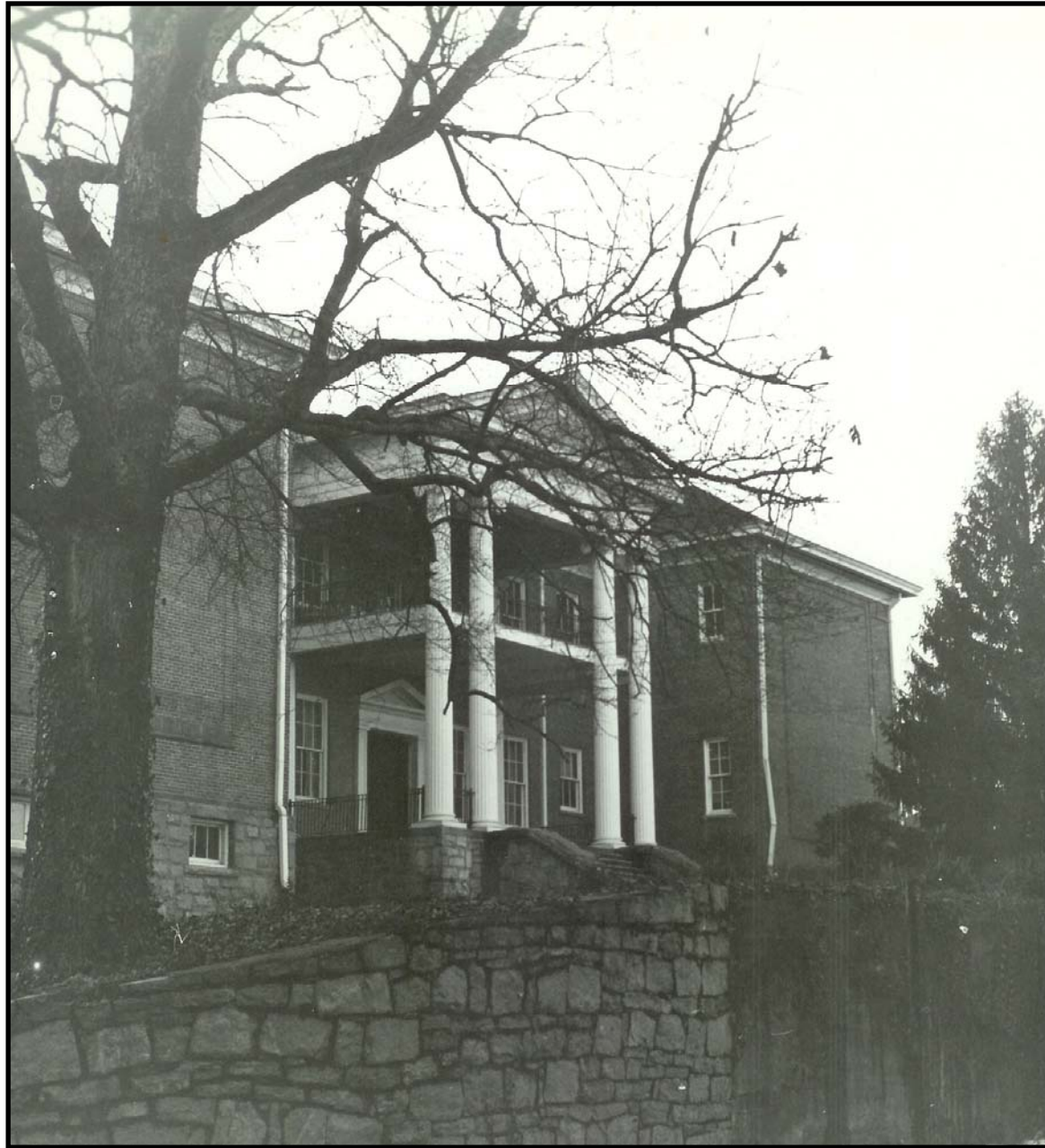


# **Pacolet Mills Elementary School Buildings**

## **Album 11**



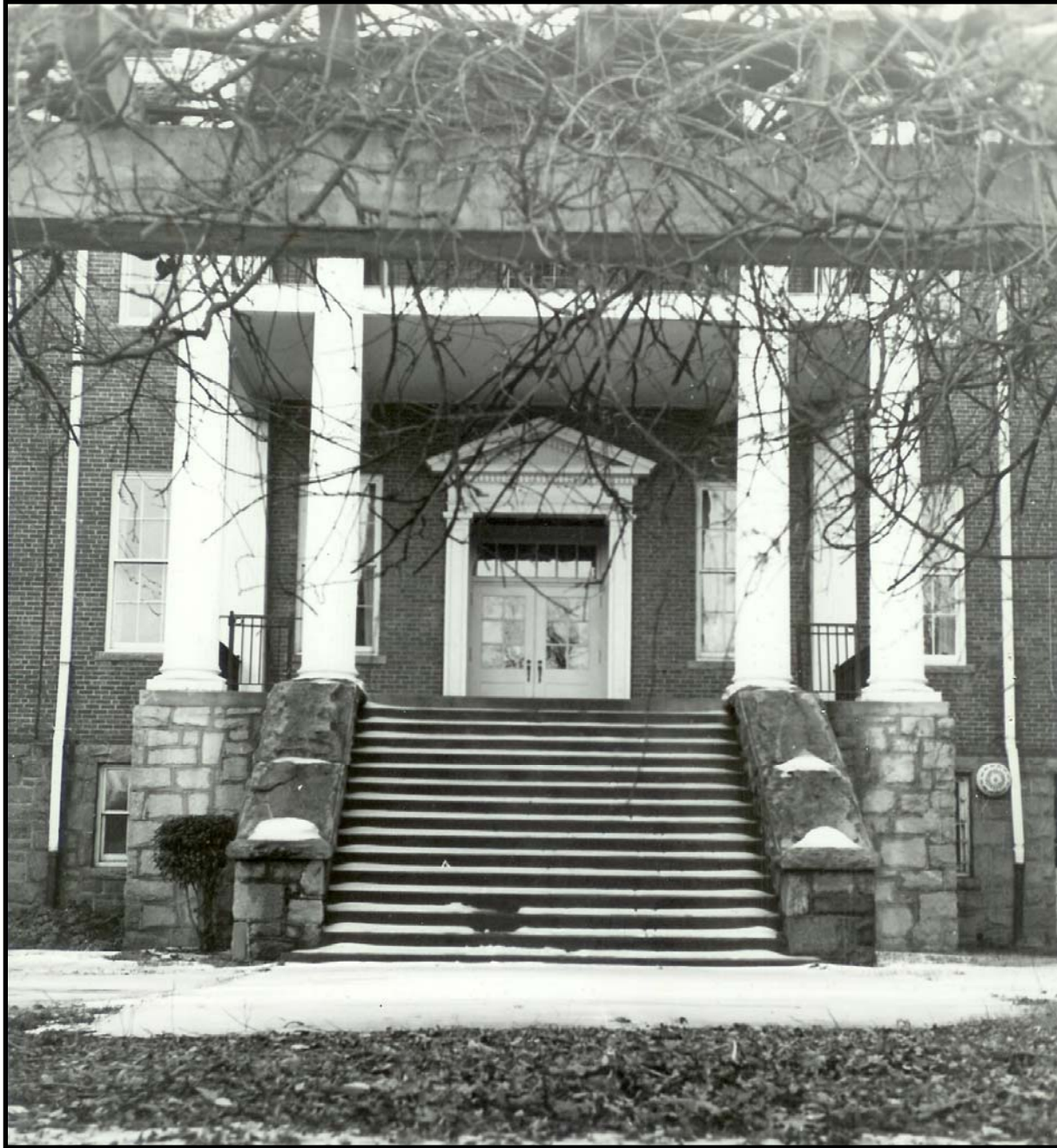


This is the front and main entrance to the [Pacolet Mills Elementary School](#). It overlooked the [mill village](#) and the [amphitheater](#). The school was built in 1921. The last classes were held in May, 1970. Sadly, the [building burned](#) in October, 1971.

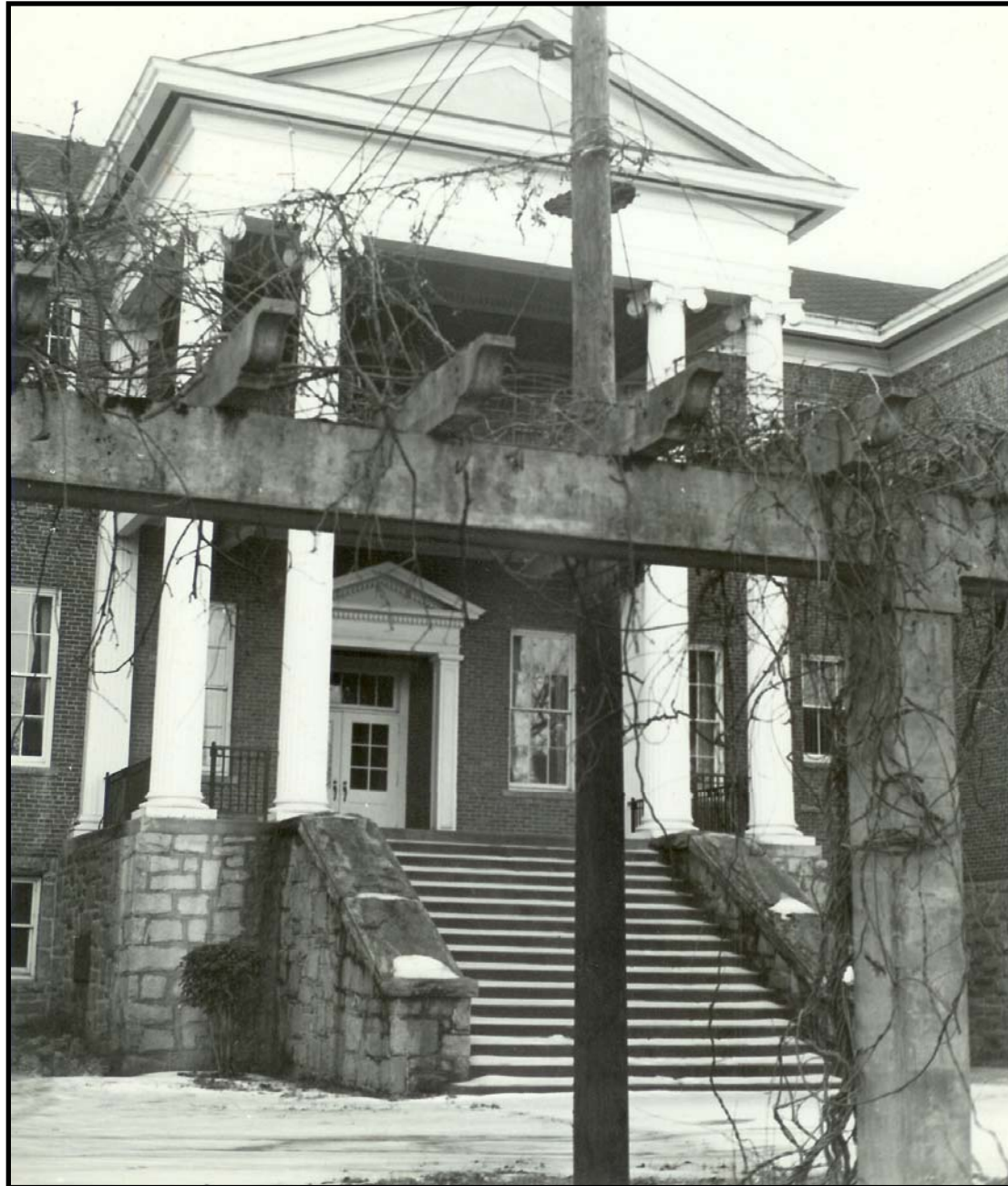


Side view of the front entrance. The [Hotel](#) can be seen in the distance.





**Close up view of the steps to the main entrance. Many of the class pictures shown in [Album 12](#) were taken on these steps. Photo was taken during a rare time that there was snow on the ground.**

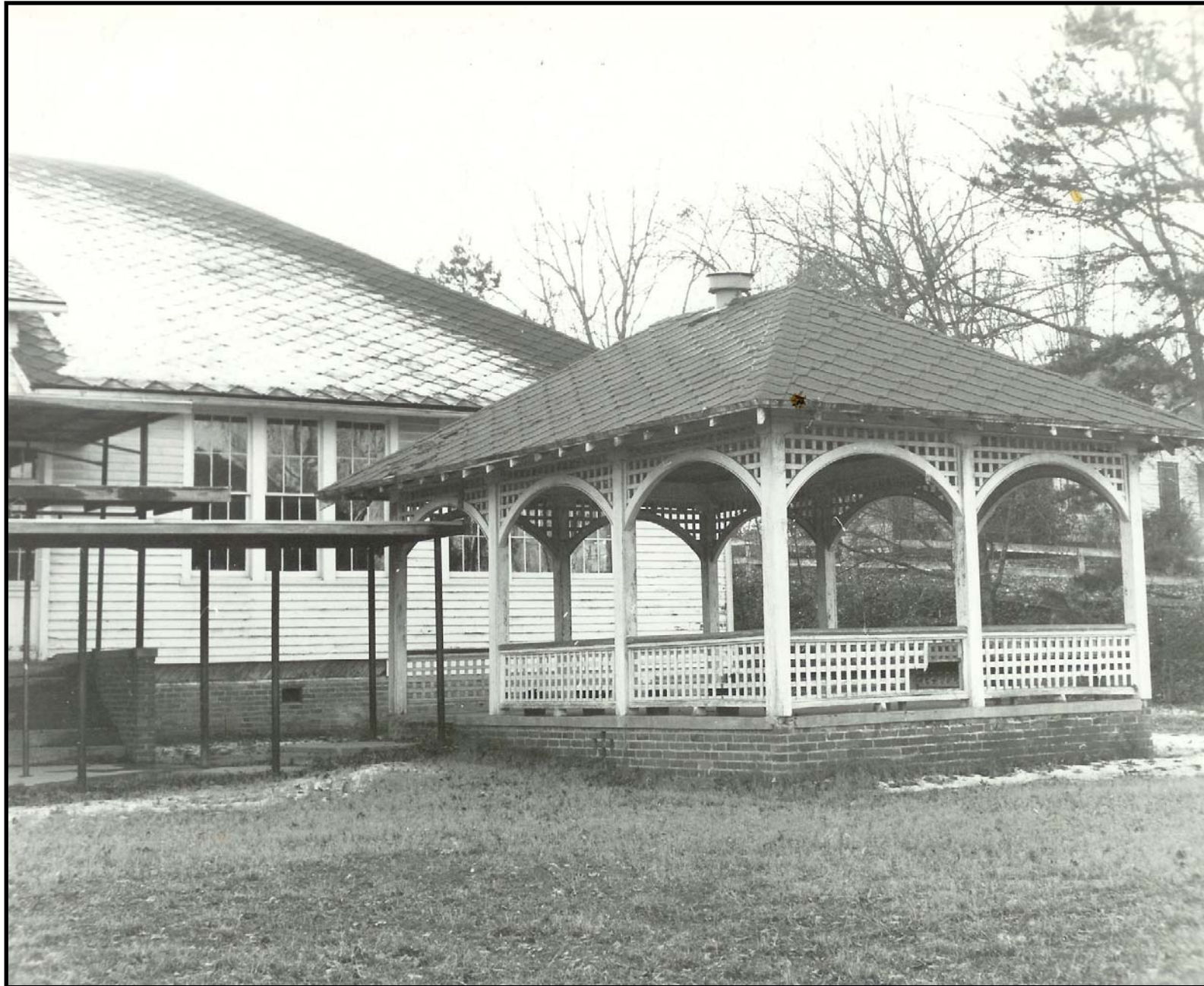


Another view of the front entrance taken from the arbor leading to the [amphitheater](#).



**Slightly different view of the front entrance and steps.**





The Annex in the background and the Gazebo in the foreground. The Annex held the first grade classes and the gymnasium. The Gazebo provided shade and shelter from rain during recess. This side of the Annex overlooked the [mill village](#) and the [amphitheater](#).





**This is a view of the back of the Annex looking across the playground.**





**This picture shows the Annex on the left, the main school building on the right and the school cafeteria between the two.**



**This view is of the steps that come down from the playground behind the Annex to the level of the school cafeteria.**



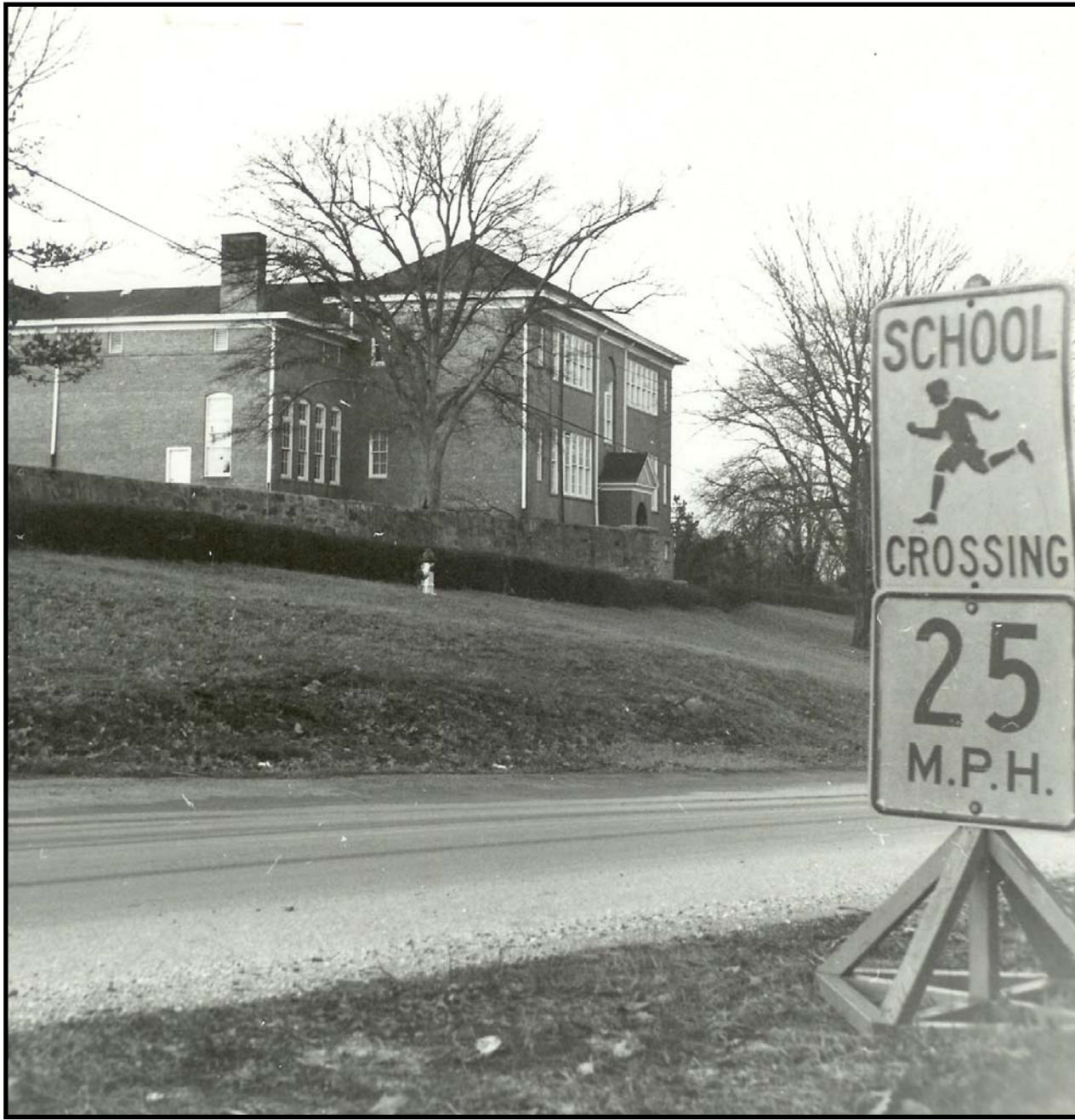


**View of covered steps leading from front of Annex down to the cafeteria.**



**The main building as seen from Sunny Acres Road.**





**Another view of the main building as seen from Sunny Acres Road.**

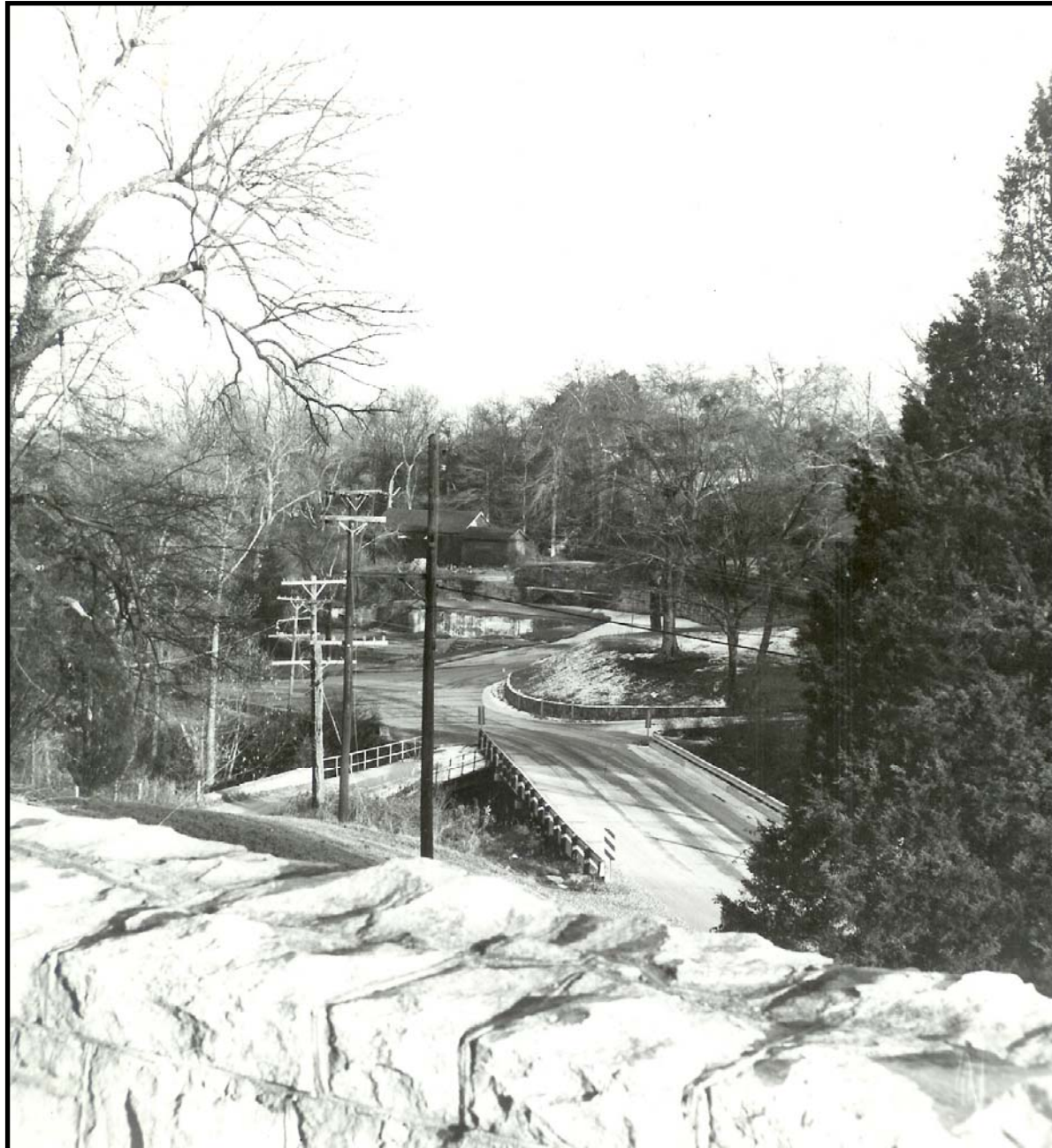


**The scene on pages 12 and 13 as it appears today.**





Picture from inside the arbor above the [amphitheater](#) showing the [Hotel](#) in the distance.



View from the school grounds looking across the bridges toward the former location of the [Hotel](#). The [“Duck Pond”](#) is just to the right of the big bridge and is hidden by the tree in the foreground.