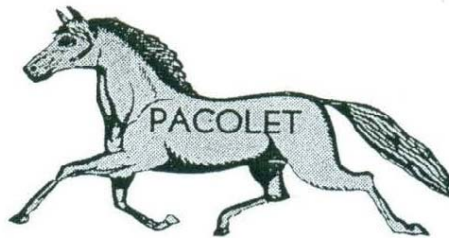




More Scenes Around Town - Album 10





This was taken in [Kegtown](#) probably in the 1930's or 40's. The car in the distance is parked in front of a filling station. This was the road to Gaffney, now Hwy 150. It goes on down to cross [Brown's Branch](#) at the bottom of the hill. In the 1950's or 60's the road was rerouted and this section of the road was bypassed. However, It is still in use today as Love Lane. See area as it looks today on the next page.



This is a photo of how the area on page 2 looks today.



This photo is looking across the [River](#). The [Pacolet Mills Elementary School](#) is on the top of the hill in the distance. The part of the village known as [Point Lookout](#), with the [old style houses](#), is on the right. Construction of the school stadium is occurring between the houses and the school. An unusual feature of this photo is that it shows the gates on the dam open or “drawn”. This allows the river to bypass the dam. [Drawing the gates](#) was a big event for men and boys of the village. The low water level stranded many fish and allowed them to be easily caught or picked up.



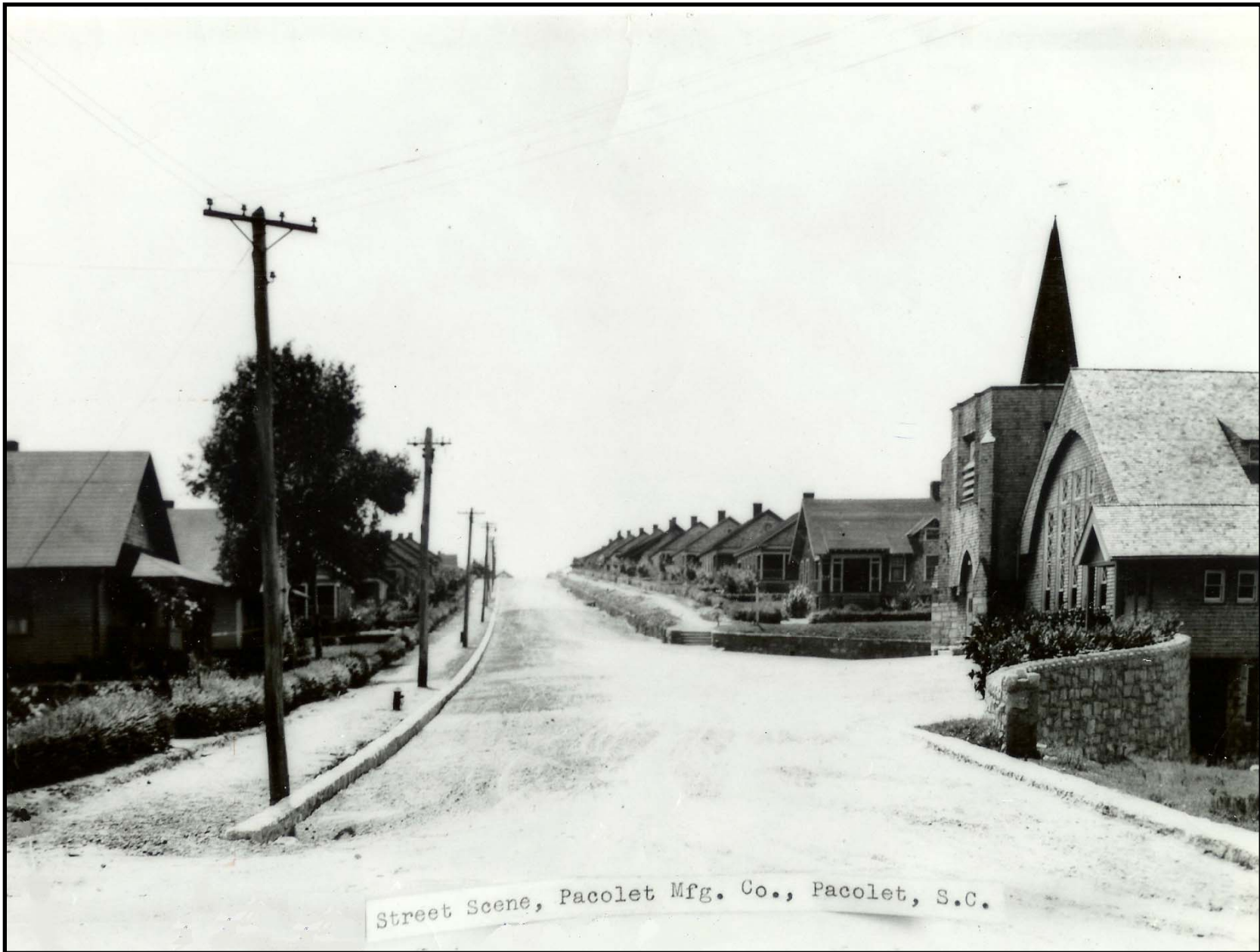
Photo of the [old iron bridge](#), probably taken in the 1940's or early 1950's. The truck stopped on this end of the bridge is probably waiting for the truck already on the narrow bridge to get off. It is not known why both doors of the waiting truck are open. Note the ["Dummy" tracks](#) in the foreground. A photo of the scene as it appears today is on the next page.



The “new” bridge as it appears today.



Photo of [White Rose Cemetery](#) during a period when the weeds were allowed to grow for some reason. The cemetery is located on Sunny Acres Road, close to the site of the former [Pacolet Mills Elementary School](#).



This photo of [Stone Street](#) was taken in the 1920's before the road was paved. It is looking up the hill past the [Baptist Church](#) on the right. Note the absence of almost all the trees. The scene as it looks like today is shown on the next page.



[Stone Street](#) and the [Baptist Church](#) as it looks today



Photo looking up [Stone Street](#) after an ice storm, probably taken in the late 1940's. Photo of about the same view today is shown on the next page.



Photo looking up [Stone Street](#) as it appears today.



This is another view of [Stone Street](#) during the same ice storm. This view is looking back down [Stone St.](#) from the vicinity of the [Methodist and Baptist Parsonages](#). The view as it looks today is on the next page.



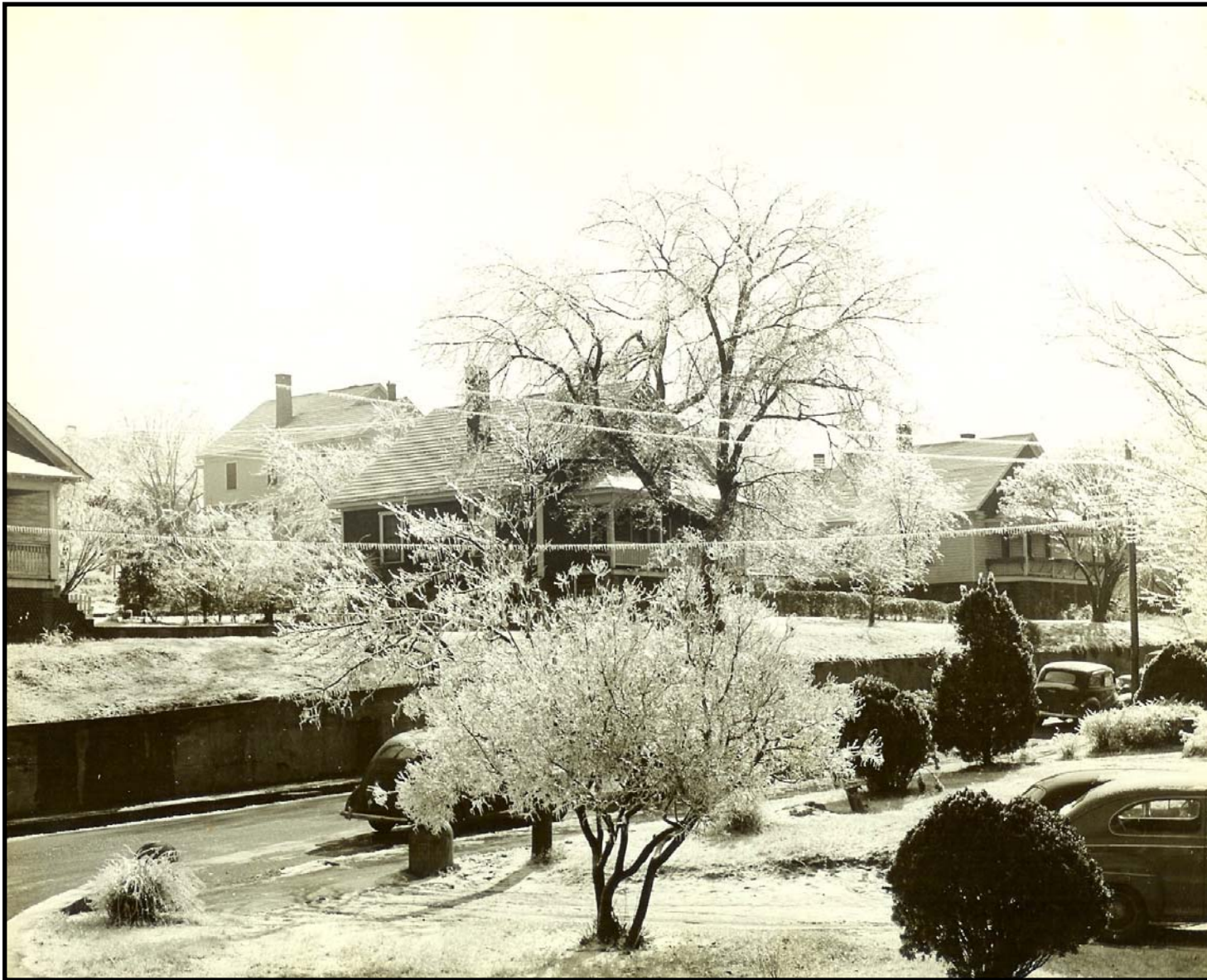
The scene on page 12 as it appears today.



Photo taken during the same ice storm but just beyond the end of [Stone Street](#). This is on Hwy 150 in front of [Leo Kirby's filling station](#) which is not shown. The two trucks are parked in front of the [B.S. Thompson Grocery store](#). Further on is [Jett's Shoe Shop](#), a [Gulf service station](#) and then [the old Community Cash](#). The scene as it looks today is on the next page.



The scene on page 14 as it appears today.



This is thought to be a view from the end of [Goodlet St.](#), in front of [the Hall](#), looking across [Montgomery Ave. to Fleming St](#) in the distance. What makes me think this, are the two rounded short concrete pillars on the right side at the driveway, that would have led into [Dr. Hill's](#) office. These same two pillars can be seen in the view as it looks today on the next page.



The scene on page 16 as it appears today. Note the two short concrete pillars that still survive.



This ice storm photo was taken on [Fleming Ave.](#) toward its intersection with [Stone St.](#) The scene on the next page shows how this appears today.



The scene on page 18 as it appears today.



Snow scene photo taken probably in the 1940's. The photographer is standing across [Goodlet Street](#) from the [Baptist Church](#). The view is looking down [Goodlet Street](#) toward [the Hall](#) in the distance. Houses "across the river" can be seen in the distance. The [old water tank](#) on [Granite Street, "Tightwad"](#), can be seen on the horizon. This scene as it looks today can be seen on the next page.



The scene on page 20 as it appears today. Note that [the Hall](#) is gone, there are vastly more trees, and a [new water tank](#) stands at the same location as the old one at the end of [Granite Street](#).