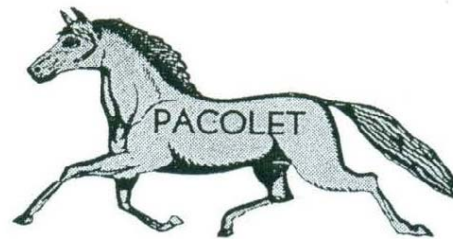


Pacolet Mills - Album No. 1





Mills No. 1 and 2. This was taken between 1888 and 1903 when both were destroyed by the **Great Flood.** Note the gas streetlight.

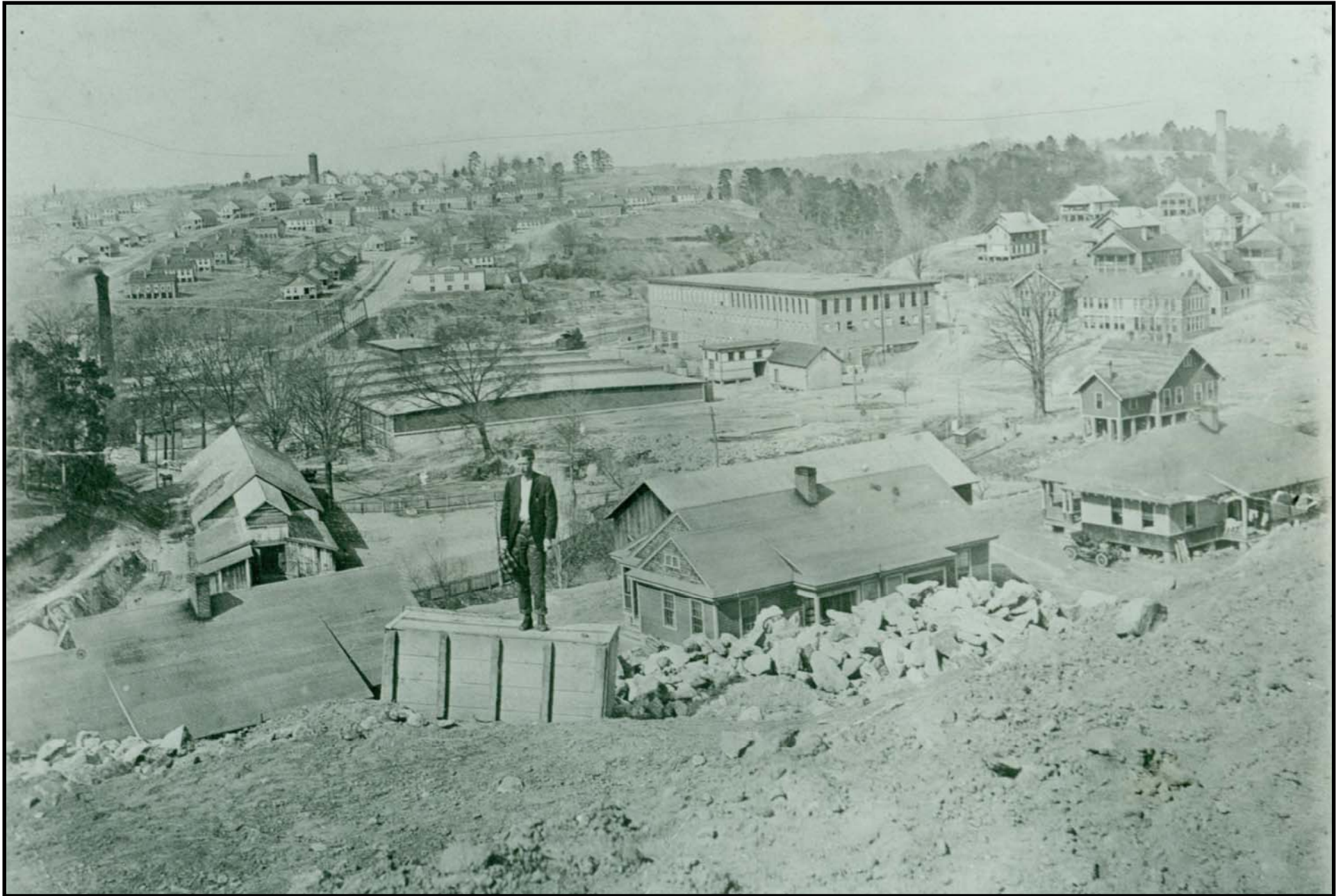


PACOLET MFG. CO., PACOLET, S. C.
PACOLET MILLS, NOS. 1 AND 2.

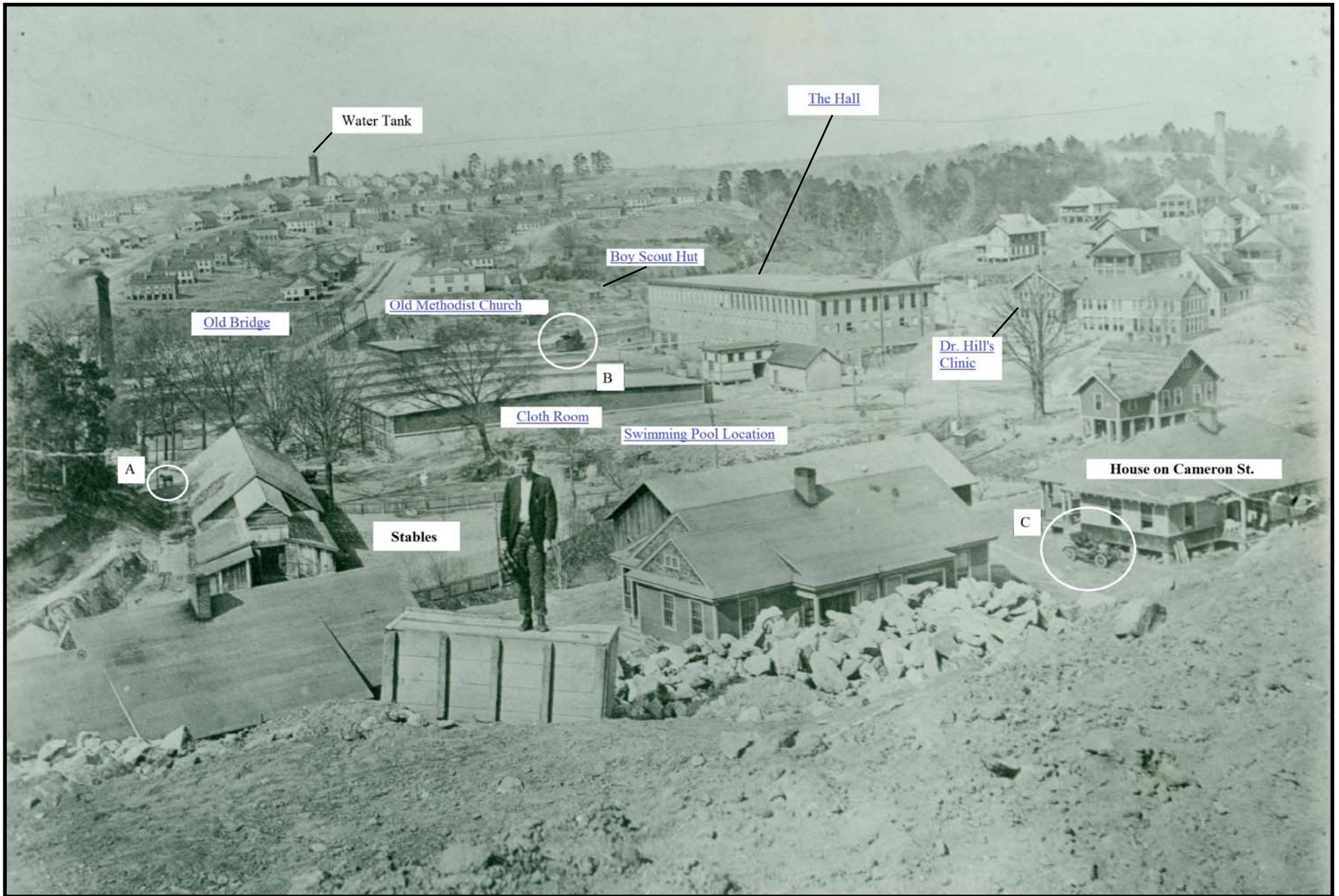
Another view of [Mills No. 1 and 2](#). The small building extension in the center of the picture housed the waterwheels which powered the mill's machinery.



This is the area known as “Point Lookout” and was up the [Pacolet River](#) above the [“New Mill” \(No, 5\)](#). Note the original [“old style” houses](#). Four of these houses were torn down when the [Pacolet Elementary School Stadium](#) was built in 1924. The site of the school is at the top left of the picture. (Editor’s Note: I was born in one of the two houses beside the river on the right side of the photo. It burned down about 1941.) None of these houses exist today.



This photo must have been taken around 1920 just after the “[new style](#)” houses were built. It gives a great panoramic view of the [village](#). The photographer must have been standing in what is Milliken St. today. See this same photo marked up with some identifying notes on the next page.



This view identifies locations and objects. Underlined text in blue is a link to more information. Object “A” is a horse in front of the company stable. “B” is the [“Dummy” locomotive](#). “C” is a 1920’s model car. A close up view of the [water tank](#) that no longer exists is shown in [Album 2](#).



Picture made in 1900. In front of the store called "Norman's" in the 1940's and 50's. From the left, Mr. Charles and Sunnie Brown, Ethyl Brown Byars, Olive Brown Jarret, and Norman. In the doorway stands Brady Arnold and Dave Braggs. The colored girl in the back, Eva, was reared by Mr. and Mrs. Brown. See [Stores](#) for location.



Scene in front of offices and Y.M.C.A. (This might be a scene of the Founder's Day celebration-1926.)



Group of Spinning Room Employees.
Mill Nos. 1 and 2, Year 1800's.

Nothing else is known about this photo. This was taken before 1903 when both [Mills No.1 and 2](#) were washed away in the [Great Flood](#). Notice that probably half of the people shown are children of elementary school age.



FIRST BAND ORGANIZED AT PACOLET IN 1911: Clarence Fowler, Will Bishop, Pink Wood, Roy Harrold, Toy Green, Ed Padgett, Ben Hendley, Boyd Green, Claude Pearson. Drums, Bill Harrold and Cofer Brown.



It is not known exactly where in Pacolet Mills this picture was made or who the man in the foreground is. However, it is believed that the lady on the horse is [Miss Belle Fuller](#). She was the town Nurse and often made her rounds on a horse. If you can identify the location or the man, please let us know. (*The mystery is solved. See pages 15 & 16.*)



This is the home of the Superintendent of [Pacolet Mills](#). It was located on the right side of the road as you are going up [Hotel Hill](#). It overlooks the [mill](#) and most of the [mill village](#). During the early 1950's, the Superintendent was Mr. C. T. "Rabb" Holland. The house has been torn down but a view of how the area looks today is shown on page 14.



Children from [Pacolet Mills Elementary School](#) probably from the 1920's. They are in the yard of the Superintendent's house. This was likely taken to publicize the elaborate spring festival that the school put on every year. The festival, itself, was held at the nearby [school stadium](#) and often attracted several hundred spectators



Site of the Superintendent's house as it looks today. Note the stone pillars on this picture and the ones on page 12.

The man in the picture on page 11 of has been identified by both Amanda Slusarczyk and Peggy Shull. He is Reverend Judson Churchill Carter. He is Amanda's granddad and Peggy's great granddad.

The location in the picture was identified by both Amanda and W. Dianne Whitt. It is just up from the [Town Hall](#) in front of where the Post Office is now. As Dianne says, the Post Office was built in the vacant lot in the middle of the photo and the houses in the background with basements are on Fleming St. It is [Miss Fuller](#) on the horse and she is entering Montgomery Ave. from Backline. A comparison photo of "then" and "now" of the scene is shown on page 16.

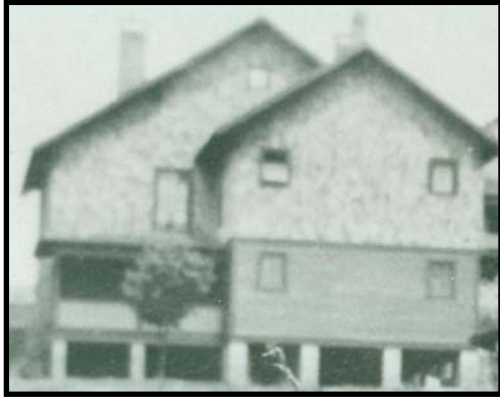
At a later time, a bandstand was built in the vacant lot. It was torn down and the present Post office was built on that spot. Photos of the bandstand are shown below.



A photo of the bandstand probably taken in the 1940's



In 1953, [Miss Belle Fuller](#) was presented with a new car by the people and the [Mill Company](#) when she retired. The presentation ceremony was held at the bandstand, which can be seen in the background.



The photo on the right is how the scene on page 11 looks today. It includes the back of the house on Fleming St. The inset on the left is how that same house looked long ago.